



# SFS MP150 Multi-Profile Framer

## Technical Specification



### Model

MP150 – Multi-Profile Framer

### Gauge Capability

Manufacturing a profile gauge from 0.6mm to 1.6mm

### Standard (3) Profiles

75mm | 89mm | 140mm

### Available Profiles

75mm | 89-90mm | 100mm | 140mm | 150mm

Additional Tool Stations can be purchased later to increase the number of profiles

---

## International Sales | Service | Support

**GlobalSteelProfiles** | Head Office – Dubai UAE

Authorized FrameMac International Sales | Service | Support | Training – Technology & Software

[www.globalsteelprofiles.com](http://www.globalsteelprofiles.com)

E: [support@globalsteelprofiles.com](mailto:support@globalsteelprofiles.com)

Chris Downey | Director

M: +971 (0) 5539 62 399

---

# Technical Specification

## SP150 – Multi-profile Framer

---

### Framer

Our SFS **MP150** Framer is a multi-profile framer producing three (3) profile widths in a thickness between 0.6mm to 1.6mm gauge galvanised steel and grade ranging from S270 to S550

### Profile Changeover

The Operator can change from one profile width to another profile width in **less than 20 minutes**

### Standard Profile Widths (3)

75mm | 89mm | 140mm

The Customer can order with the standard 3 profile widths or any combination of the following widths;

65mm | 75mm | 89-90mm | 100mm | 140mm | 150mm

For additional profiles the customer can purchase the Tool Stations at a later date.

### Electrical Requirements

3phase | 50-60Hz electrical supply connected to the Framer electrical cabinet/mains isolator, the De-Coiler 3phase power is connected and supplied from the Framer

### FrameWare Operating Software

The Framer management operating software, FrameWare is pre-installed onto the on-board PC/Touch Screen Monitor ready to process the project production files.

The customer in the technology package receives the pre-loaded management software with licensing rights, the customer has title to their FrameWare and does not pay for on-going annual leasing charges

---

## De-Coiler

The SFS De-Coiler has the load capacity to carry 3 Ton steel coils varying in width as required for profiles from 63mm to 150mm and a maximum steel coil diameter of 1200mm

### Hydraulic Hub Expander Option

When the steel coil is loaded the De-Coiler Hub and manually expands to secure the steel coil, or there is a hydraulic option, this eliminates manually expanding & securing the coil.

The hydraulic option must be requested at time of ordering the Framer, this option cannot be fitted at a later date.

---



# Technical Specification

## MP150 Multi-Profile Framer

### Machine Specification

Model	MP150
Typical Production Speed	Design Dependent
Production Metres/Hour	270-700 Metres/Hour
Machine Software	FrameWare
Operating System	Windows
CADesign Software	ProCAD Software included & compatible with Vertex BD   StrucSoft
Industrial Touch Screen	17inch monitor
Production Data Input	USB Plug - USB Stick
Multi-Task Operations	Add   Modify   Cancel
Production Graphics	Operations shown in real time
Production Options	Batch or Single Profile Operation
Ambient Air	Operating Range 0 - 35DegC

### Machine Data

Machine Chassis	CNC machined box structure
Power transmission	Geared
Roll Forming Stations	13 Sets of Rollers
Drive Servo Motor	SEW Power Capacity 15kW
Hydraulic Pump Motor	Motor Capacity 11kW
Mains Power Supply	36kW   380V   50Hz   3phase
Customised Power Range	380 - 415V   50 - 60Hz
Hydraulic Tank Capacity	120Litres
Hydraulic Cooling System	Radiator with Auto regulated Fan
Hydraulic Systems	European Solenoids/Valves
Main Electronics	International Brands

### Machine Physical Dimensions

Length	7400mm
Height	1650mm
Width	1250mm
Machine Weight	6,100Kg (approximately)
Production Footprint	16.4Metres x 1.8Metres

# Technical Specification

## MP150 Multi-Profile Framer

### Framer De-Coiler Specification

Automatic Feed	Motorized Power Arm
Maximum Coil Strip Width	300mm
Coil Inner Diameter	460mm - 520mm Hub Diameter
Maximum Outer Coil	1,200mm Diameter
Maximum Coil Weight	3,000Kg
Hub Arms	Hydraulic Expansion
Drive Motor Power	Connected to the MP150 Framer
De-Coiler Dimensions	L 750mm   W 1000mm   H 1950mm

### Framer Profile Data

Profile Type	C & U Channel Profile Shapes
Available Profile Widths (mm)	75   89-90   100   140   150mm options
Profile Flange & Lip (mm)	Flange 40-50mm   Lip 8-13mm
Steel Strip Widths (mm)	177   191   208   248   258mm
Material Strip Thickness	0.6mm to 1.6mm (24g - 16g)
Material Strength	Grade S270 - S500
Material Strip Coating	Z170 - Z275

### Framer Tool Station Operations

Service Hole	33mm Dia
Bolt Hole	13mm Dia
Dimple Connection Hole	3.5mm Dia
Tool Station Monitoring	Proximity Sensors optimizing
<b>Nine (9) Profile Operations</b>	
Part-Full Shear   Web Hole	Lip Cut   Truss End   Index Holes
Dimple Hole   Web Notch	End Shear   Service Hole

### Profile ID Inkjet Printing

Ink Delivery	Mathews Inkjet System
Single Print Head	Standard
Dual Print Heads	ID Printing of Profile to both sides of the Profile flanges

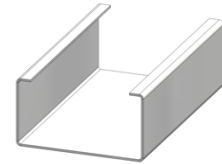
# Technical Specification

## MP150 Multi-Profile Framer

### Profile Operations – same functions for all (3) widths

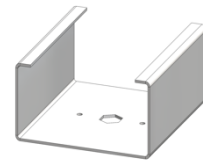
#### 1. Track & Stud

Automated Track Width change for effortless Stud inserting



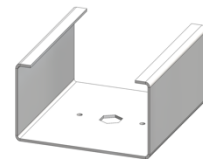
#### 2. 13mm Dia Bolt Holes

For Bottom Plate Anchor Bolts or bolting frames together



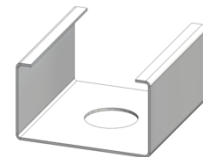
#### 3. 3.5mm Dia Web Holes

Index Holes for locating Frame to Frame Screws & ease of fixing



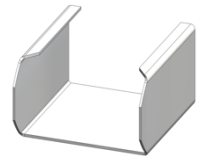
#### 4. 33mm Dia Service Holes

Hole through Frame Profile Web for Services/Cabling/Conduits



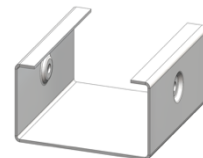
#### 5. End Chamfer

For Anchor Bolt for frame to frame connection or bottom plate



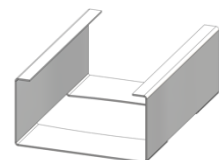
#### 6. Dimple Connection Holes

Dimpled 3.5mm Dia connection holes for flush fixings



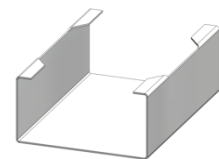
#### 7. Web Notch

For Single & Continuous Nogs so studs can pass through



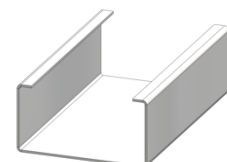
#### 8. Lip Notch

Lip cut that enables a stud to be inserted into a bottom/top plate



#### 9. Shear

Part Cut or Full Cut Guillotine Shear



# Technical Specification

## MP150 Multi-Profile Framer

### Framer Technology Support

#### Quotation

In your technology package that we quote you is inclusive of all that you need to commence your LGS production.

#### Commercial Contract

You place your order directly with SFS-International the manufacturer so your contract and payments are secure and we at GlobalSteelProfiles provide the customer support.

#### GlobalSteelProfiles – Our Role

After the contract is confirmed & deposit paid we communicate with you during the stages of your Framer manufacture, we advise you with photos of the phases of manufacture and notify you when your Framer is crated and made ready for shipping.

We are your International Service & Support not only at the sales/quotation stages when we advise you during your purchasing decisions, but we are also the essential after sales service & support, we have over 20 years' experience in this industry.

#### Shipment Tracking

We at GlobalSteelprofiles are also based in Europe with our Head Office in Dubai, UAE notify you of the ex-works and logistics progress at the SFS factory and forward copies of all shipping documentation and track your delivery to your port.

### Framer Technology Package

#### The Total Solution

Our all-inclusive technology package

#### The Technology

- The MP150 Framer & De-Coiler
- Spare Parts & Maintenance Tool Kit
- USB Flash Drive
- Technical Manuals
- Electrical & Hydraulic Schematics
- 12months parts & labour warranty

#### The Software

- ProCAD CAdesign Software
- FrameWare Operating System Software

#### Machine Commissioning & Training by the GlobalSteelProfiles Team

- Commissioning & Training by our European Technician at your premises/factory
- Including ProCAD Software Training

*"Precision Engineering, high quality Components"*

**Fast, proven reliability and very accurate steel frame machine manufacturing solution from SFS, a very cost-effective design & build technology.**

*SFS have built a reputation for manufacturing well engineered, industrial grade machines to International standards with ease of maintenance.*

- All hydraulic operations are monitored by proximity sensors to maximise the production rate and condition of the punch stations.
- The design of the rolling bay that cold forms the steel coil into the C Channel Profile ensures that the forming and shape is well defined and to a high tolerance
- High quality solenoids/actuators, valves provide efficient hydraulic flows and cooler operation
- All stations are designed & built with ease of maintenance in mind.
- The quality and accuracy of the profile shape with precise connections ensures that the framing components are easily assembled for rapid production of your steel frame structures.
- Very close tolerances make possible true load end-bearing frames for multi-storey structures.